

UNDERGROUND WASTE SYSTEMS

INGENIO G5

THE NEXT GENERATION



GOING UNDERGROUND

GETTING TO THE BOTTOM OF THINGS

Large volumes of waste generated in condensed urban areas create both logistical and ergonomic issues. Our comprehensive range of underground waste systems provides a cleaner, greener and more aesthetic collection solution. Increase operational efficiency and reduce your carbon footprint by less transport and a one-man operation.

MAXIMUM VOLUME, MINIMUM SPACE

Above ground: an aesthetically styled receptacle column - below ground: a miracle of spaciousness with a capacity of up to 5m³. That's INGENIO, the underfloor solution for large quantities of refuse in residential and urban settings where appearance is at a premium. The system is entirely suitable for use by the elderly or children, and is also easily accessible to wheelchair users.

FUNCTIONAL AND CONFORMING TO STANDARDS

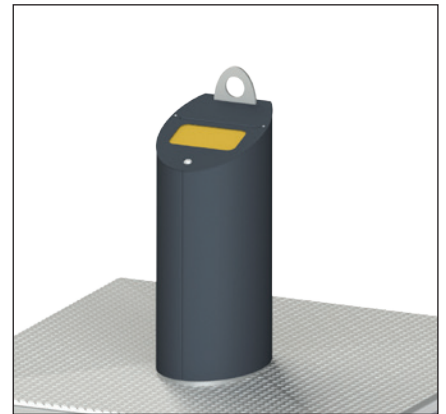
ESE always considers the entire logistics and application chain when designing products, including requirements for filling, emptying, handling, health and safety. INGENIO fulfils all current European and national standards and is certified in accordance with the European standard EN 13071.



Aesthetic solution



Holes for visual security inspection



Equinox column in slim design

INGENIO IS GENIUS

- Provides a complete modular solution ready to install, delivered either preassembled or semi knocked down (SKD).
- High quality materials and finishing provide a superior product
- A complete range of optional components available to assist monitoring and improve operational efficiency

FEATURES

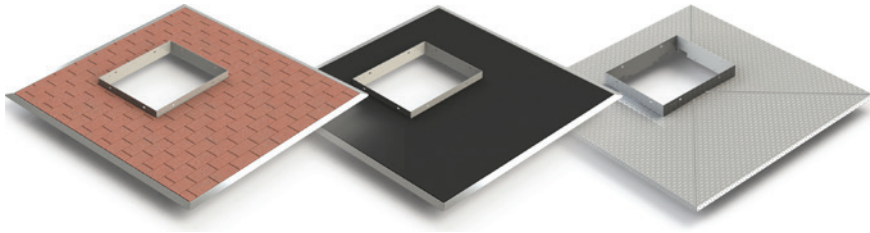
- Unique security lock-down system
- Built-in drainage
- Concrete casing guaranteed for 10 years C35/45 traffic class 45
- The 150 kg minimum load capacity of the safety platform required by standards is satisfied by a wide margin

MODULAR DESIGN

The INGENIO G5 UWS System consists of various modules which can be combined regarding design, volume and placement according to the clients wishes. Different columns and fraction inserts make the INGENIO the perfect collection system for waste and recyclables.



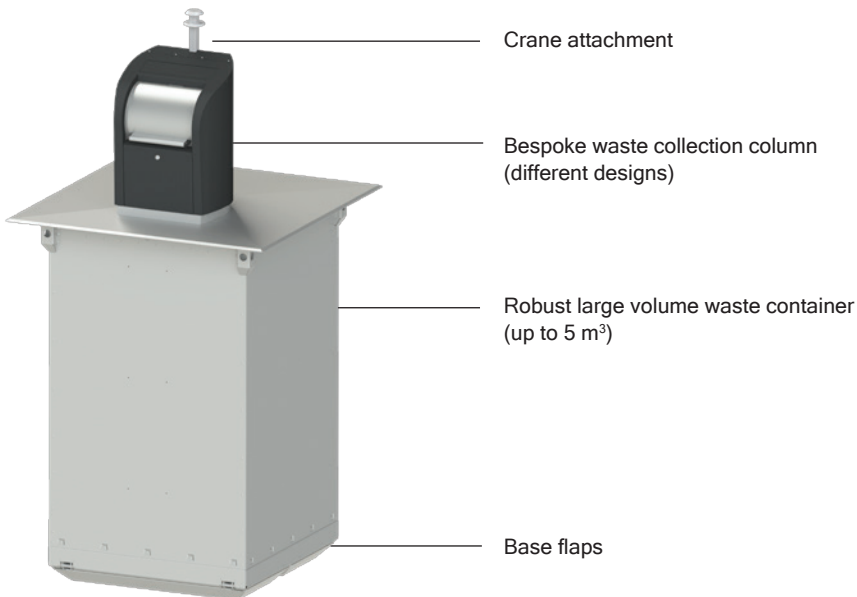
Evolution column with different inserts



Pedestrian platform available with different surfaces



1-hook, 2-hook, mushroom and 3-hook system (DIN EN 13071-3)



OPTIONS

- Double drum
- Recycling apertures
- All common lifting systems
- Fill level monitoring system
- GPS route management
- RFID access control
- Maintenance / Service package

ESE - WE VALUE YOUR RECYCLABLES



KERBSIDE SYSTEMS
MOBILE CONTAINERS FOR
WASTE AND RECYCLABLES



BRING SYSTEMS
(SEMI-) UNDERGROUND SYSTEMS
COLLECTION BANKS



BIO SELECT LINE
CONTAINERS AND COMPOSTERS
FOR GARDEN AND BIO WASTE



HAZARDOUS WASTE CONTAINERS
MOBILE FUEL CONTAINERS
MOBILE OIL CHANGE UNITS



PUBLIC FURNISHING
BINS FOR THE PUBLIC SPACE



CONTAINER MANAGEMENT
DISTRIBUTION, REGISTRATION,
COLLECTION AND RECYCLING

ESE is Europe's leading manufacturer of temporary storage solutions for waste and recyclables. Our comprehensive range of products is complemented by a full service offer from container management to the recycling of products at the end of their lifetime. Specialists in all departments develop solutions to meet our customers' requirements. In doing so, we follow the principle of highest possible sustainability from product development and production to transport.